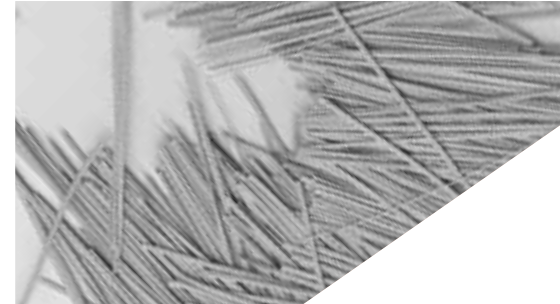


# BarChip MQ58

From Elasto Plastic Concrete

BarChip MQ58 from Elasto Plastic Concrete is a high performance structural synthetic fibre concrete reinforcement, optimised for pavements and industrial floors. The unique composition of BarChip MQ58 enables a perfect, fibre free finish on your concrete works.

Work with EPC and together we'll unlock the full potential of your concrete mix.



Packaged in pucks in mulchable paper bags and big bags for automated dosing. Safely stacked 3 pallets high on recyclable UPVC pallets.



## Benefits

- Comprehensive design and technical support
- Redistributes load - increased ductility / toughness
- Eliminates corrosion - long term durability
- Eliminates set-up of steel mesh
- Improves precast production speeds up to 50%
- Increases abrasion and impact protection
- 70% reduction in carbon footprint compared to steel
- Safer and lighter to handle than steel
- Reduced wear on concrete pumps and hoses
- BarChip fibre is UV stabilised to resist solar deterioration
- Weather proof packaging on multi-stack UPVC pallets

## Product Features (see SDS for more details)

Characteristic	EPC BarChip MQ58	Standard
Fibre Class II	For structural use in concrete, mortar and grout	EN 14889-2
Tensile Strength	640 MPa	JIS L 1013/ISO 2062
Young's Modulus	10 GPa	JIS L 1013/ISO 2062
Length	58 mm	
Anchorage	Continuous Embossing	
Base Material	Bi-Component Polymer	
Alkali Resistance	Excellent	
CE Certification		0120 - GB10/79678
ISO 9001:2008 Certification		JKT 0402914

## Dosage

BarChip MQ58 has a regular dosage rate of 2.5 kg to 5 kg per cubic metre. Dosage rate should be determined based on performance requirements. Regular dose rates may reduce measured slump.

## Mixing

EPC BarChip MQ58 is added "Bags and All" to the mixer with initial batch water. Follow with dry materials and mix at high speed for the required revolutions. Alternative batching techniques can be applied.

Undertake mix optimisation with EPC specialists to ensure you're getting optimal output from your concrete mix. For more information view EPC's batching and mixing guide.

## Pumping

EPC BarChip MQ58 can be pumped through 50 mm rubber hoses without difficulty. Precautions should be taken to ensure the fibres can pass freely through the hopper grate.

## Handling and Storage

EPC BarChip MQ58 is packed in pucks in 5 kg mulchable paper bags (420 kg per pallet) and supplied on durable, recyclable plastic pallets with a fitted rain hood to allow storage outdoors. Bags stored individually must be protected from water damage.

For more information contact your nearest EPC representative.

## Conformity

Conforms to ASTM C 1116 - Type III  
Conforms to EN 14889 - 2





EPC BarChip MQ58  
Macro Synthetic Fibre

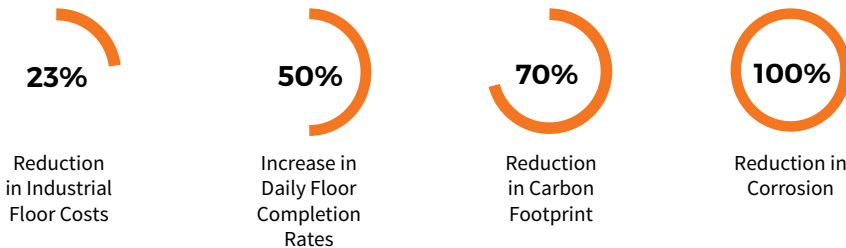
# BarChip MQ58



## Easy Finish Fibre

Surface finish is a major problem for many fibre reinforcements. Protruding fibres and fibre patches are common areas of concern. BarChip MQ58's uniquely engineered design and material composition ensures it remains embedded below the concrete surface without any changes to normal finishing processes. BarChip MQ58 achieves a fibre free surface with all common finishing techniques.

## BarChip MQ58 Delivers Real Results.



Reinforcing Over 5 Million m<sup>2</sup> of Flooring Works

## Environmentally Friendly Concrete Reinforcement

BarChip synthetic fibre reduces carbon footprint compared to steel fibre and steel mesh alternatives. EPC analysed the carbon footprint of a nominal 175 mm thick, 100,000 m<sup>2</sup> commercial floor reinforced with 5 kg/m<sup>3</sup> BarChip, 25 kg/m<sup>3</sup> steel fibre and 2 layers of steel mesh.

Steel Fibre kg CO <sub>2</sub> e	Steel Mesh kg CO <sub>2</sub> e	BarChip Fibre kg CO <sub>2</sub> e	Total Carbon Saving vs. Steel Fibre (kg CO <sub>2</sub> e)	Total Carbon Saving vs. Steel Mesh (kg CO <sub>2</sub> e)
1,060,937	974,000	243,250	<b>817,687</b>	<b>730,750</b>

### That's Equal To



**259**

Tonnes of waste recycled instead of land filled.



**21,191**

Tree seedlings grown for 10 years.



**121**

Homes electricity use for one year.

How much carbon would you save by choosing BarChip synthetic fibre reinforcement?



### Elasto Plastic Concrete

info@elastoplastic.com

N. America: +1 704 843 8401

Australia: +61 1300 131 158

EMEA: +353 (0) 1 469 3197

Asia: +65 6835 7716

S. America: +56 2 2703 1563

Brazil: +55 19 3722 2199



**Elasto Plastic Concrete**  
The Synthetic Fibre Experts

[WWW.ELASTOPLASTIC.COM](http://WWW.ELASTOPLASTIC.COM)

Distributors are located in other regions. For contact details visit [www.elastoplastic.com](http://www.elastoplastic.com).

Disclaimer: This information has been provided as a guide to performance only, for specific and supervised conditions. The user is advised to undertake their own evaluation and use the services of professionals to determine the product suitability for any particular project or application prior to commercial use. ISO 9001:2008 © Elasto Plastic Concrete 2017 PSMQ58\_2017\_1